



# Web map visualisation of inspections for the Swedish Civil Contingencies Agency

Marie Högkvist  
Rickard Johansson



# Overview

- ▶ Background
- ▶ Our system
- ▶ Summary



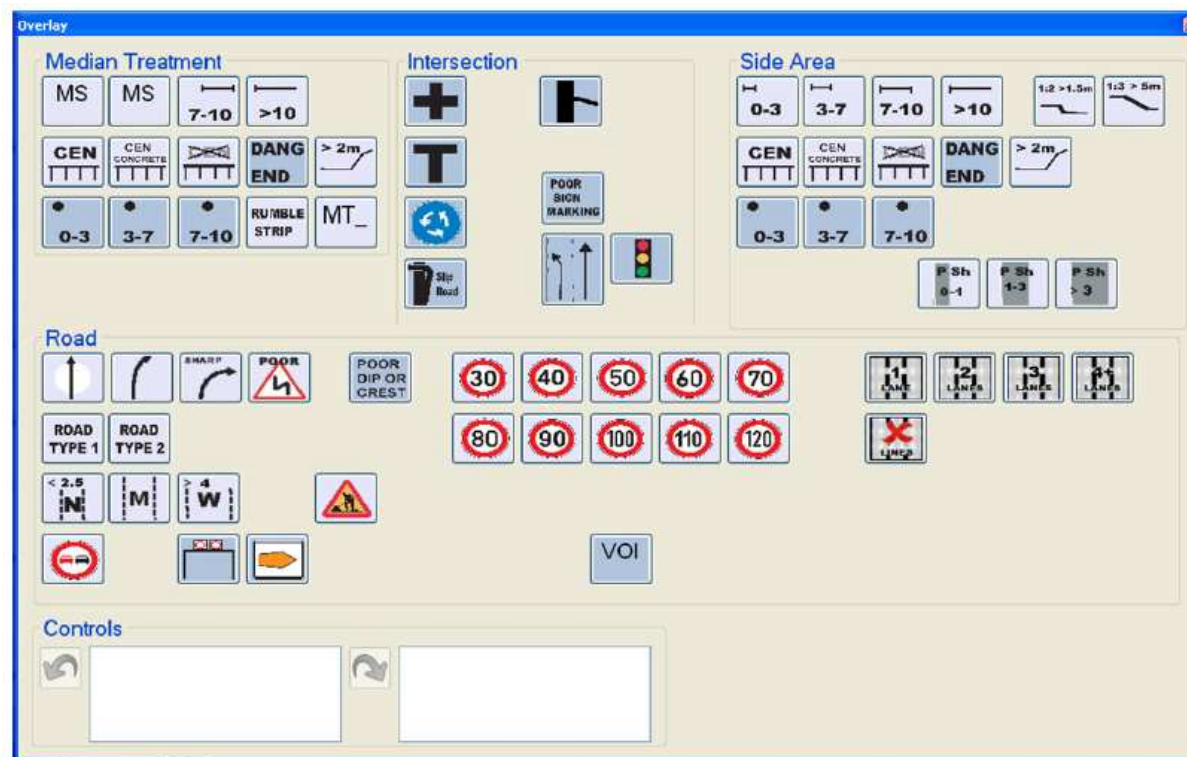
# Background

- ▶ MSB Inspections
- ▶ Inconsistent paper reports



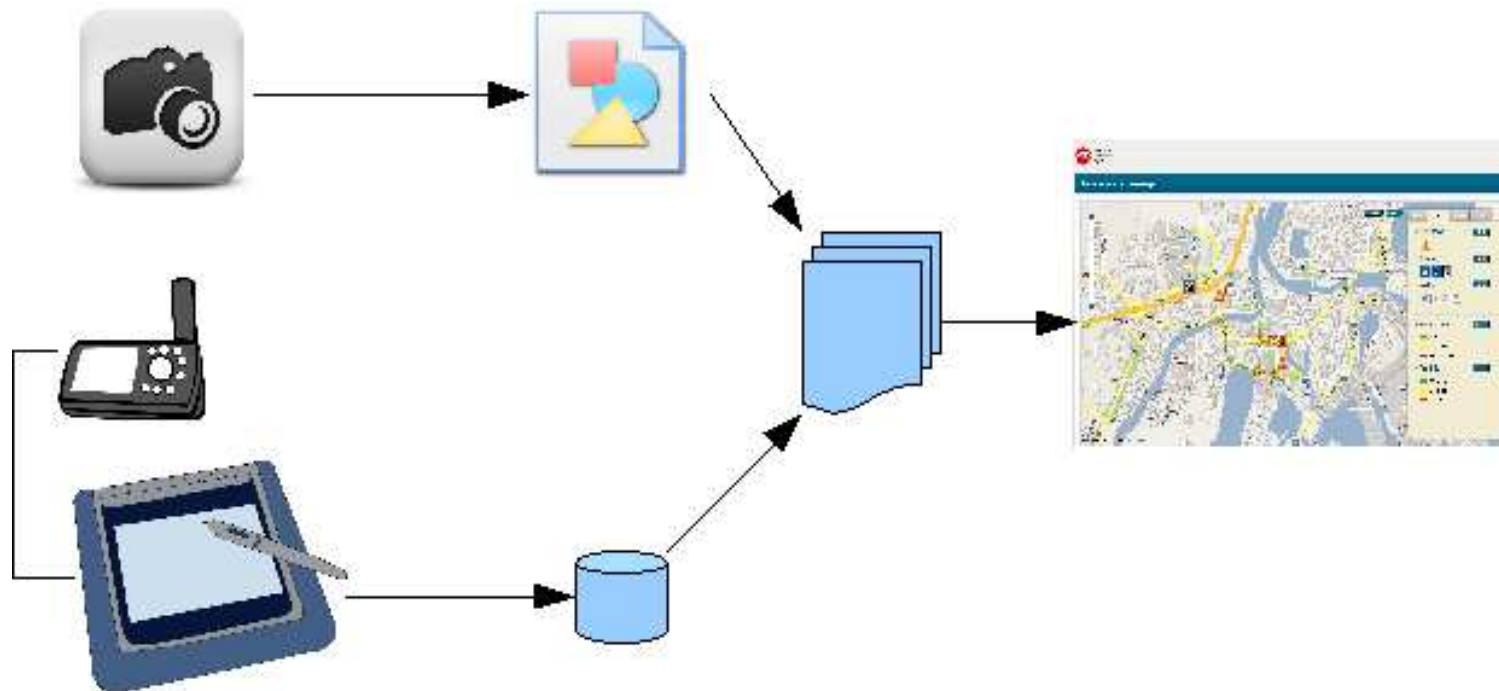
# Background

- ▶ RAPID (Road Assessment Program Inspection Device)





# System, overview





# System, GUI

**MSB** Swedish Civil Contingencies Agency

## Roadinspection webmap

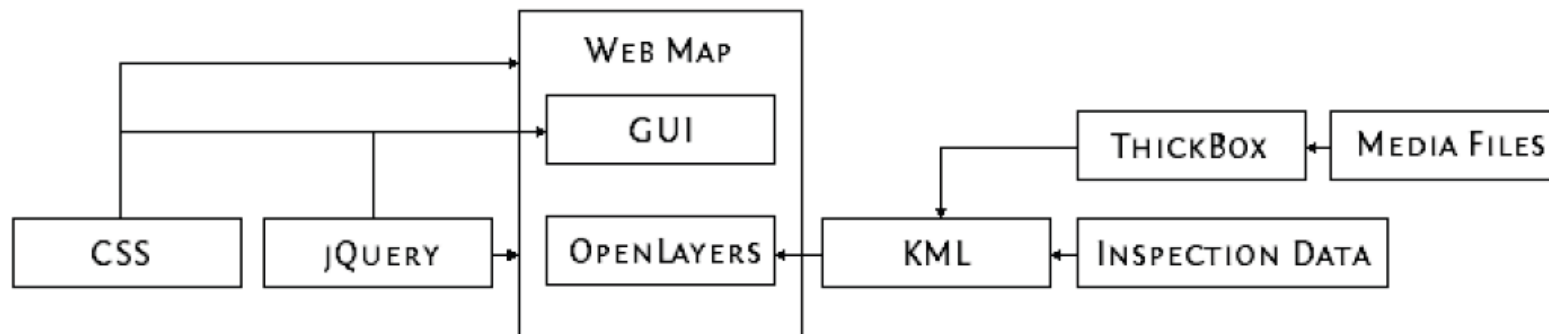
The map displays road inspection data for Karlstad, Sweden. The roads are color-coded based on their width and type. A legend on the right side of the map provides the following details:

- Obstacles:** Includes icons for a warning sign, a truck, and a car.
- Service:** Includes icons for a gas station, a parking sign, and a bus stop.
- Media:** Includes icons for a camera, a microphone, and a document.
- Road Width:**
  - Good width: Green line
  - Ok width: Yellow line
  - Narrow width: Red line
- Road Type:**
  - Ashphalt: Green line
  - Concrete: Yellow line
  - Gravel: Red line

The map also features a navigation panel on the left with a zoom slider and a 'Terrain' button. The top right corner includes a 'Satellite' button and a 'Camp' button. The bottom left corner shows the Google Maps logo and copyright information for 2010 Tele Atlas.



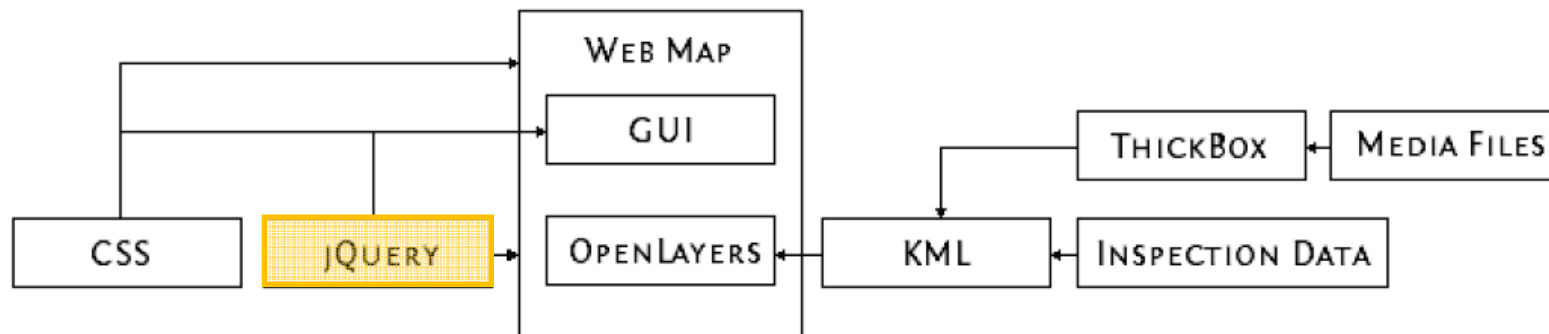
# System, backend





# System, jQuery

- ▶ A JavaScript Library that simplifies JavaScript development.

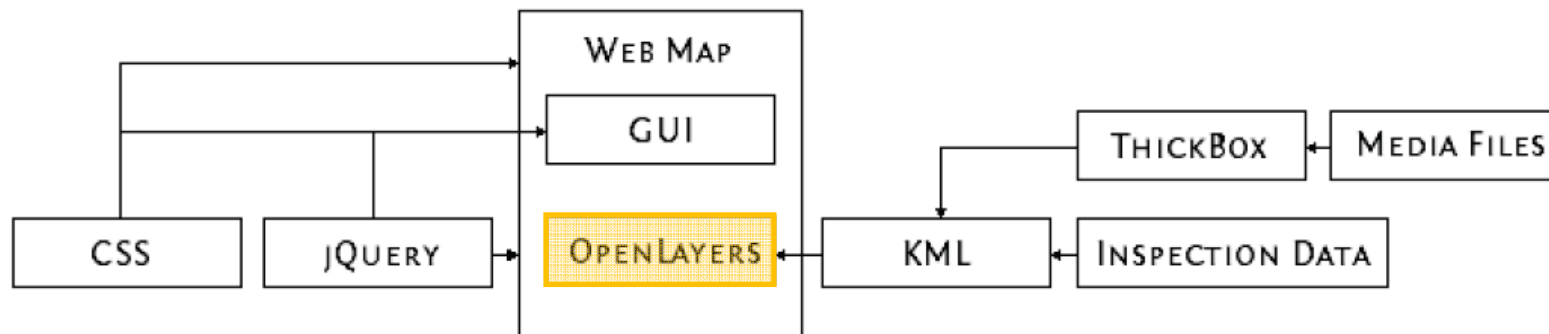






# System, OpenLayers

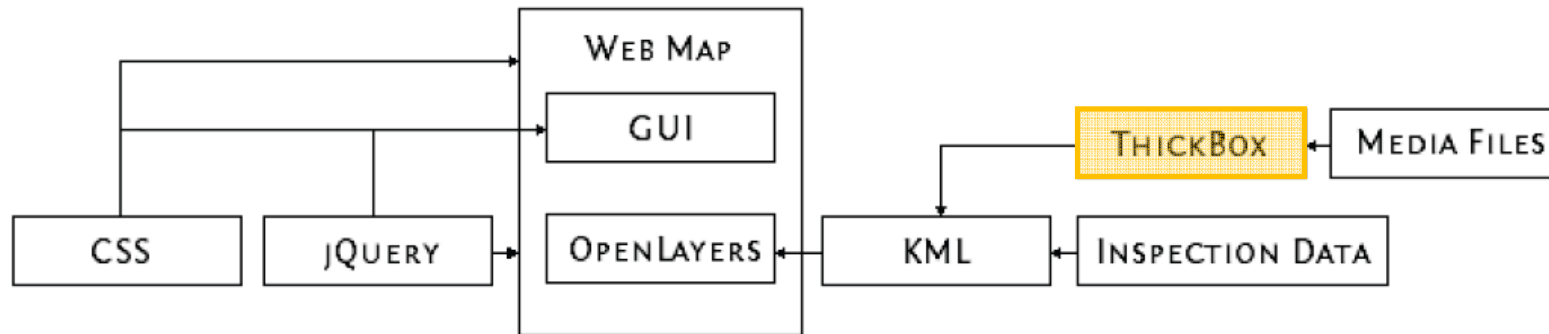
- ▶ A JavaScript Library used for web map development





# System, ThickBox

- ▶ A JavaScript Library used to display media files.





# Demonstration

DEMO!



# Summary

- ▶ Quick Overview
- ▶ Sharing is Caring



# Questions?

Thank you for listening! 😊